

MC²

18 Bothwell Street

Glasgow
G2 6NU



Well located offices,
blending traditional style
with a modern twist.

Type	To Let
Size	2,463 sq ft
Rent	£17.50 per sq ft
Fitout	Fitted

mc2-offices.com

0141 266 0717

Description

The building is accessed from a contemporary entrance foyer with a modern video door entry system.

Stairs and a passenger lift provide access to all upper floors.

The office space provides bright efficient accommodation with good natural light.

MC²

18 Bothwell Street

Glasgow
G2 6NU



Well located offices, blending traditional style with a modern twist.

Type	To Let
Size	2,463 sq ft
Rent	£17.50 per sq ft
Fitout	Fitted

mc2-offices.com

0141 266 0717

Specification

- Striking modern reception foyer
- Flexible open plan layout
- Gas fired central heating
- Raised access flooring
- LG7 pendant lighting
- Private male, female & disabled toilets
- Shower facility on each floor
- Secure video door entry system allowing 24 hour access
- 8 person passenger lift serving all floors
- 'A' EPC Rating
- Adjacent to Glasgow Central Railway Station
- Numerous bars and restaurants and convenience stores located adjacent to the property



MC²

18 Bothwell Street

Glasgow
G2 6NU

Well located offices,
blending traditional style
with a modern twist.

Type	To Let
Size	2,463 sq ft
Rent	£17.50 per sq ft
Fitout	Fitted

mc2-offices.com

0141 266 0717

Accommodation

The t-shaped floor plate provides natural daylight on two sides.

Floor	Size	Status
3rd	1,963 sq ft	Let
2nd	2,463 sq ft	Available
1st	3,970 sq ft	Let



MC²

18 Bothwell Street

Glasgow
G2 6NU

Well located offices,
blending traditional style
with a modern twist.

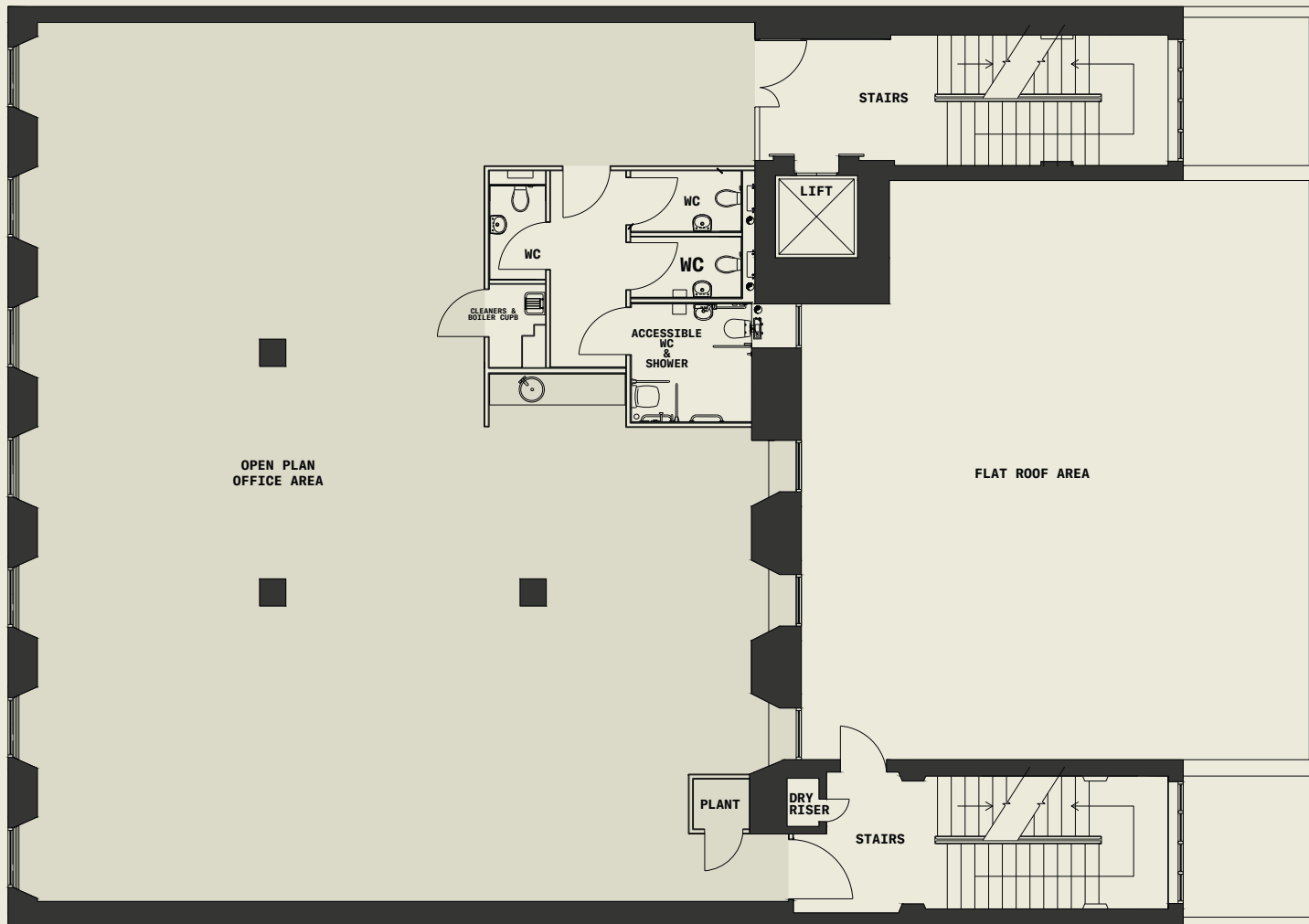
Type	To Let
Size	2,463 sq ft
Rent	£17.50 per sq ft
Fitout	Fitted

mc2-offices.com

0141 266 0717

Floor Plans

Second Floor



MC²

18 Bothwell Street

Glasgow
G2 6NU

Well located offices,
blending traditional style
with a modern twist.

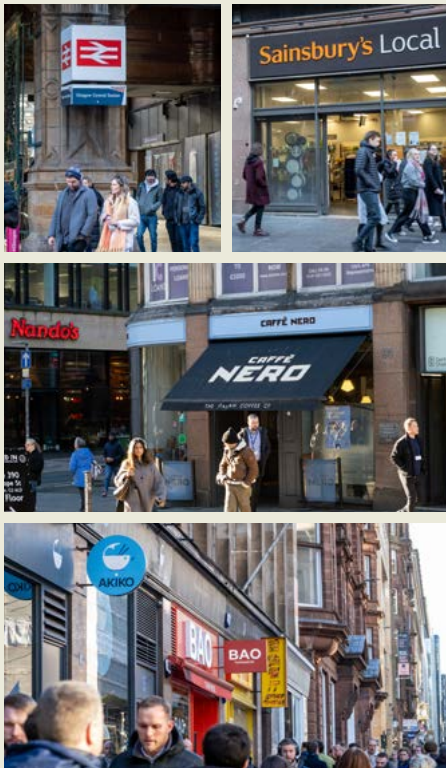
Type	To Let
Size	2,463 sq ft
Rent	£17.50 per sq ft
Fitout	Fitted

mc2-offices.com

0141 266 0717

Location

- Easy access from the M8 Motorway
- Prime Bothwell Street location
- Adjacent to Glasgow Central Railway Station
- Numerous bars, restaurants and convenience stores are located adjacent to the property



MC²

18 Bothwell Street

Glasgow
G2 6NU

Well located offices, blending traditional style with a modern twist.

Type	To Let
Size	2,463 sq ft
Rent	£17.50 per sq ft
Fitout	Fitted

mc2-offices.com

0141 266 0717



We are an independent real estate agency, with expert local knowledge of Scotland's cities and towns. We ensure our clients, whether landlord or tenant, vendor or purchaser, receive the best advice. Offices are at the heart of what we do and it's been our passion since 1995.



Member of corfac.com

MC² gives notice that these particulars are set out as a general outline only for the guidance of intending Purchasers or Lessees and do not constitute any part of an offer or missives. Details are given without any responsibility and any intending Purchasers, Lessees or Third Party should not rely on them as statements or representations of fact, but must satisfy themselves by inspection or otherwise as to the correctness of each of them. No person employed or engaged by MC² has any authority to make any representation or warranty whatsoever in relation to this property. MC² is the licensed trading name of MC² (Glasgow) Ltd. Company registered in Scotland no SC704375. Registered office: 9 Royal Crescent, Glasgow G3 7SP. Generated on January 2025.

Colin Mackenzie

Founder

colin@mc2-offices.com

+44 (0)7912 805 890

Andy Cunningham

Founder

andy@mc2-offices.com

+44 (0)7793 808 490

mc2-offices.com

0141 266 0717