

# MC<sup>2</sup>

## 126 West Regent Street

Glasgow  
G2 2RQ



---

Fully fitted and furnished workspaces, located minutes away from Sauchiehall Street.

---

Type	To Let
Size	150 - 9,000 sq ft
Rent	POA
Fitout	Fitted

---

[mc2-offices.com](http://mc2-offices.com)

---

0141 266 0717

# Specification

- Stylish, contemporary building
- EPC 'D+' rating
- Fully furnished studios
- Short term leases, offering maximum flexibility
- 24/7 access
- 1GB leased line internet connectivity
- Dogs allowed



# MC<sup>2</sup>

## 126 West Regent Street

Glasgow  
G2 2RQ

Fully fitted and furnished workspaces, located minutes away from Sauchiehall Street.

Type	To Let
Size	150 - 9,000 sq ft
Rent	POA
Fitout	Fitted

[mc2-offices.com](http://mc2-offices.com)

0141 266 0717

# Accommodation

Floor	Suite	Size	Status
3rd	9	360 sq ft	Let
3rd	8	260 sq ft	Let
3rd	7	320 sq ft	Available
3rd	6	290 sq ft	Let
3rd	4	210 sq ft	Available
3rd	3	510 sq ft	Available
2nd	8 & 7	1,900 sq ft	Let
2nd	6	265 sq ft	Let
2nd	5	265 sq ft	Available
2nd	4	1,100 sq ft	Let
2nd	3	395 sq ft	Let
2nd	2	295 sq ft	Let
2nd	1	294 sq ft	Let
1st	10	320 sq ft	Let
1st	7	410 sq ft	Let
1st	6	310 sq ft	Let
1st	5	310 sq ft	Available
1st	4	260 sq ft	Let
1st	2	150 sq ft	Let
1st	1	300 sq ft	Let
Ground	1	1,700 sq ft	Let

# MC<sup>2</sup>

## 126 West Regent Street

Glasgow  
G2 2RQ

Fully fitted and furnished workspaces, located minutes away from Sauchiehall Street.

Type	To Let
Size	150 - 9,000 sq ft
Rent	POA
Fitout	Fitted

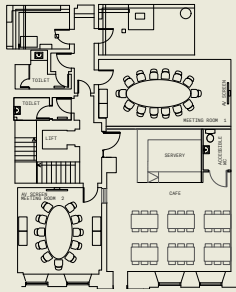
[mc2-offices.com](http://mc2-offices.com)

0141 266 0717

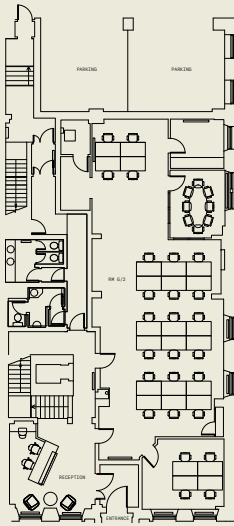




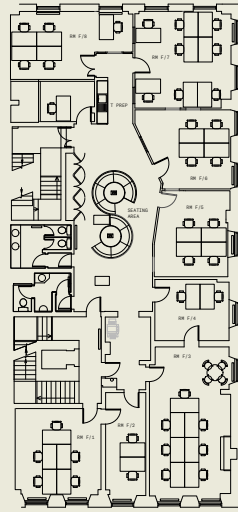
# Space Plans



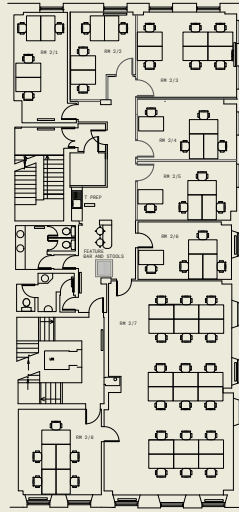
BASEMENT



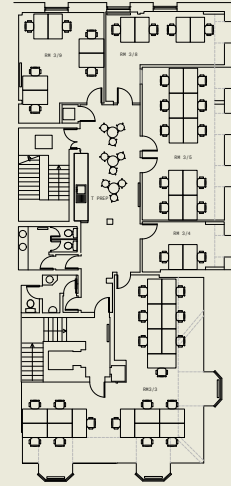
GROUND FLOOR



FIRST FLOOR



SECOND FLOOR



THIRD FLOOR

# MC<sup>2</sup>

## 126 West Regent Street

Glasgow  
G2 2RQ

Fully fitted and furnished workspaces, located minutes away from Sauchiehall Street.



Type	To Let
Size	150 - 9,000 sq ft
Rent	POA
Fitout	Fitted

[mc2-offices.com](http://mc2-offices.com)

0141 266 0717

# Location



# MC<sup>2</sup>

## 126 West Regent Street

Glasgow  
G2 2RQ

Fully fitted and furnished workspaces, located minutes away from Sauchiehall Street.

Type	To Let
Size	150 - 9,000 sq ft
Rent	POA
Fitout	Fitted

[mc2-offices.com](http://mc2-offices.com)

0141 266 0717

The logo for MC², featuring the letters 'MC' in a bold, black, sans-serif font, with a superscripted '2' to the right.

---

We are an independent real estate agency, with expert local knowledge of Scotland's cities and towns. We ensure our clients, whether landlord or tenant, vendor or purchaser, receive the best advice. Offices are at the heart of what we do and it's been our passion since 1995.

The logo for CORFAC INTERNATIONAL, with 'CORFAC' in a larger font above 'INTERNATIONAL', and a curved line above the text.

Member of [corfac.com](http://corfac.com)

MC² gives notice that these particulars are set out as a general outline only for the guidance of intending Purchasers or Lessees and do not constitute any part of an offer or missives. Details are given without any responsibility and any intending Purchasers, Lessees or Third Party should not rely on them as statements or representations of fact, but must satisfy themselves by inspection or otherwise as to the correctness of each of them. No person employed or engaged by MC² has any authority to make any representation or warranty whatsoever in relation to this property. MC² is the licensed trading name of MC² (Glasgow) Ltd. Company registered in Scotland no SC704375. Registered office: 9 Royal Crescent, Glasgow G3 7SP. Generated on June 2024.

---

**Colin Mackenzie**

Founder

[colin@mc2-offices.com](mailto:colin@mc2-offices.com)

+44 (0)7912 805 890

**Andy Cunningham**

Founder

[andy@mc2-offices.com](mailto:andy@mc2-offices.com)

+44 (0)7793 808 490

---

[mc2-offices.com](http://mc2-offices.com)

---

0141 266 0717