

MC²

21 West Nile Street

Glasgow
G1 2PS



Fully furnished studios.

Type	To Let
Size	224 - 1,357 sq ft
Rent	£15 per sq ft
Fitout	Fitted

mc2-offices.com

0141 266 0717

Description

Every organisation needs a space that fits them - whether that's down to the size, location, facilities, other occupants, or simply the look and feel of the place. At 21 West Nile Street, we've got a studio to serve as the perfect base for your business.

MC²

21 West Nile Street

Glasgow
G1 2PS



Indicative Finishes

Fully furnished studios.

Type	To Let
Size	224 - 1,357 sq ft
Rent	£15 per sq ft
Fitout	Fitted

mc2-offices.com

0141 266 0717

Specification

- Stylish, contemporary building
- EPC 'E' rating
- Fully furnished studios
- Short term leases, offering maximum flexibility
- 24/7 access
- 1GB leased line internet connectivity
- Dogs allowed

MC²

21 West Nile Street

Glasgow
G1 2PS

Fully furnished studios.



Indicative Finishes



Indicative Finishes

Type	To Let
Size	224 - 1,357 sq ft
Rent	£15 per sq ft
Fitout	Fitted

mc2-offices.com

0141 266 0717

Accommodation

Floor	Suite	Size	Status
3rd	V	273 sq ft	Available
3rd	U	396 sq ft	Available
3rd	T	464 sq ft	Available
3rd	S	244 sq ft	Let
3rd	R	230 sq ft	Let
3rd	Q	162 sq ft	Let
3rd	P	380 sq ft	Let
2nd	O	189 sq ft	Let
2nd	N	210 sq ft	Let
2nd	M	337 sq ft	Let
2nd	L	221 sq ft	Let
2nd	K	263 sq ft	Let
2nd	J	224 sq ft	Available
2nd	I	96 sq ft	Let
2nd	H	100 sq ft	Let
2nd	G	341 sq ft	Let
1st	F	186 sq ft	Let
1st	E	220 sq ft	Let
1st	D	482 sq ft	Let
1st	C	193 sq ft	Let
1st	B	257 sq ft	Let
1st	A	205 sq ft	Let

MC²

21 West Nile Street

Glasgow
G1 2PS

Fully furnished studios.

Type	To Let
Size	224 - 1,357 sq ft
Rent	£15 per sq ft
Fitout	Fitted

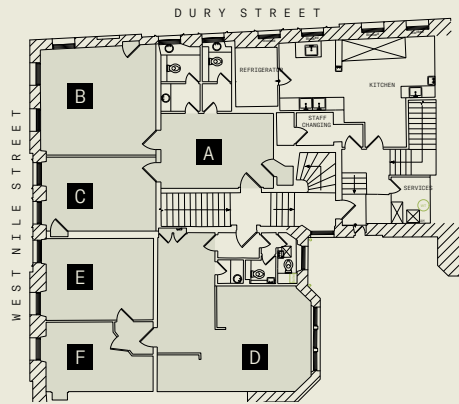
mc2-offices.com

0141 266 0717

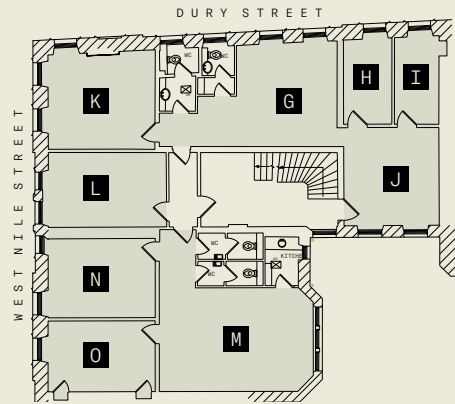


Indicative Finishes

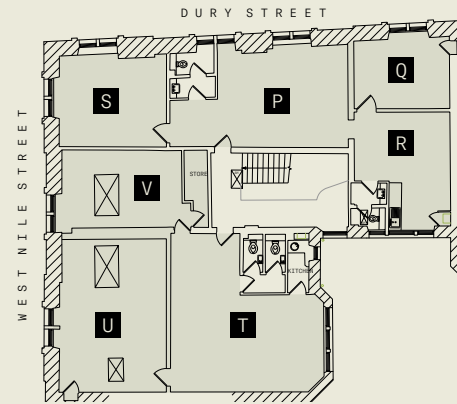
Floor Plans



First Floor



Second Floor



Third Floor

MC²

21 West Nile Street

Glasgow
G1 2PS

Fully furnished studios.

Type	To Let
Size	224 - 1,357 sq ft
Rent	£15 per sq ft
Fitout	Fitted

mc2-offices.com

0141 266 0717

Location



MC²

21 West Nile Street

Glasgow
G1 2PS

Fully furnished studios.

Type	To Let
Size	224 - 1,357 sq ft
Rent	£15 per sq ft
Fitout	Fitted

mc2-offices.com

0141 266 0717



We are an independent real estate agency, with expert local knowledge of Scotland's cities and towns. We ensure our clients, whether landlord or tenant, vendor or purchaser, receive the best advice. Offices are at the heart of what we do and it's been our passion since 1995.



Member of corfac.com

MC² gives notice that these particulars are set out as a general outline only for the guidance of intending Purchasers or Lessees and do not constitute any part of an offer or missives. Details are given without any responsibility and any intending Purchasers, Lessees or Third Party should not rely on them as statements or representations of fact, but must satisfy themselves by inspection or otherwise as to the correctness of each of them. No person employed or engaged by MC² has any authority to make any representation or warranty whatsoever in relation to this property. MC² is the licensed trading name of MC² (Glasgow) Ltd. Company registered in Scotland no SC704375. Registered office: 9 Royal Crescent, Glasgow G3 7SP. Generated on November 2024.

Colin Mackenzie

Founder

colin@mc2-offices.com

+44 (0)7912 805 890

Andy Cunningham

Founder

andy@mc2-offices.com

+44 (0)7793 808 490

mc2-offices.com

0141 266 0717