

MC²

74 Waterloo Street

Glasgow
G2 7DJ



A range of thoughtfully designed studios, with private meeting spaces and breakout areas.

Type	To Let
Size	1,506 - 13,816 sq ft
Rent	£25 psf
Fitout	Fitted

mc2-offices.com

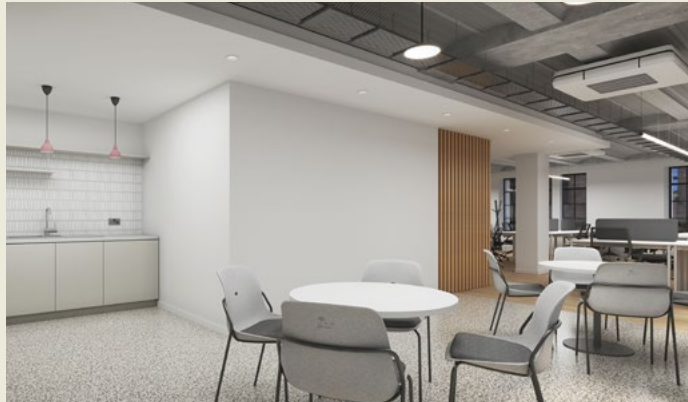
0141 266 0717

Description

The building is accessed from a contemporary entrance foyer with modern video door entry system.

Stairs and a passenger lift provide access to all the upper floors.

The studios offer bright efficient spaces flooded with natural light.



MC²

74 Waterloo Street

Glasgow
G2 7DJ

A range of thoughtfully designed studios, with private meeting spaces and breakout areas.

Type	To Let
Size	1,506 - 13,816 sq ft
Rent	£25 psf
Fitout	Fitted

mc2-offices.com

0141 266 0717

Specification

- Furnished studios with air conditioning
- 100% electric - no fossil fuels
- Targeting EPC 'A' rating
- Short simple lease
- 24/7 access
- Super-fast internet
- Video door entry system
- All studios have private meeting rooms & kitchen / breakout areas
- Car parking & cycle storage
- WCs and showers on each floor
- Dog friendly

MC²

74 Waterloo Street

Glasgow
G2 7DJ



A range of thoughtfully designed studios, with private meeting spaces and breakout areas.

Type	To Let
Size	1,506 - 13,816 sq ft
Rent	£25 psf
Fitout	Fitted

mc2-offices.com

0141 266 0717

Accommodation

Floor	Suite	Desks	Size	Status
1st	Front	20	1,506 sq ft	Available Jan/Feb 2025
1st	Rear	34	1,948 sq ft	Available Jan/Feb 2025
2nd	Front	20	1,506 sq ft	Available Jan/Feb 2025
2nd	Rear	34	1,948 sq ft	Available Jan/Feb 2025
3rd	Front	20	1,506 sq ft	Available Jan/Feb 2025
3rd	Rear	34	1,948 sq ft	Available Jan/Feb 2025
4th	Front	20	1,506 sq ft	Available Jan/Feb 2025
4th	Rear	34	1,948 sq ft	Available Jan/Feb 2025

MC²

74 Waterloo Street

Glasgow
G2 7DJ



A range of thoughtfully designed studios, with private meeting spaces and breakout areas.

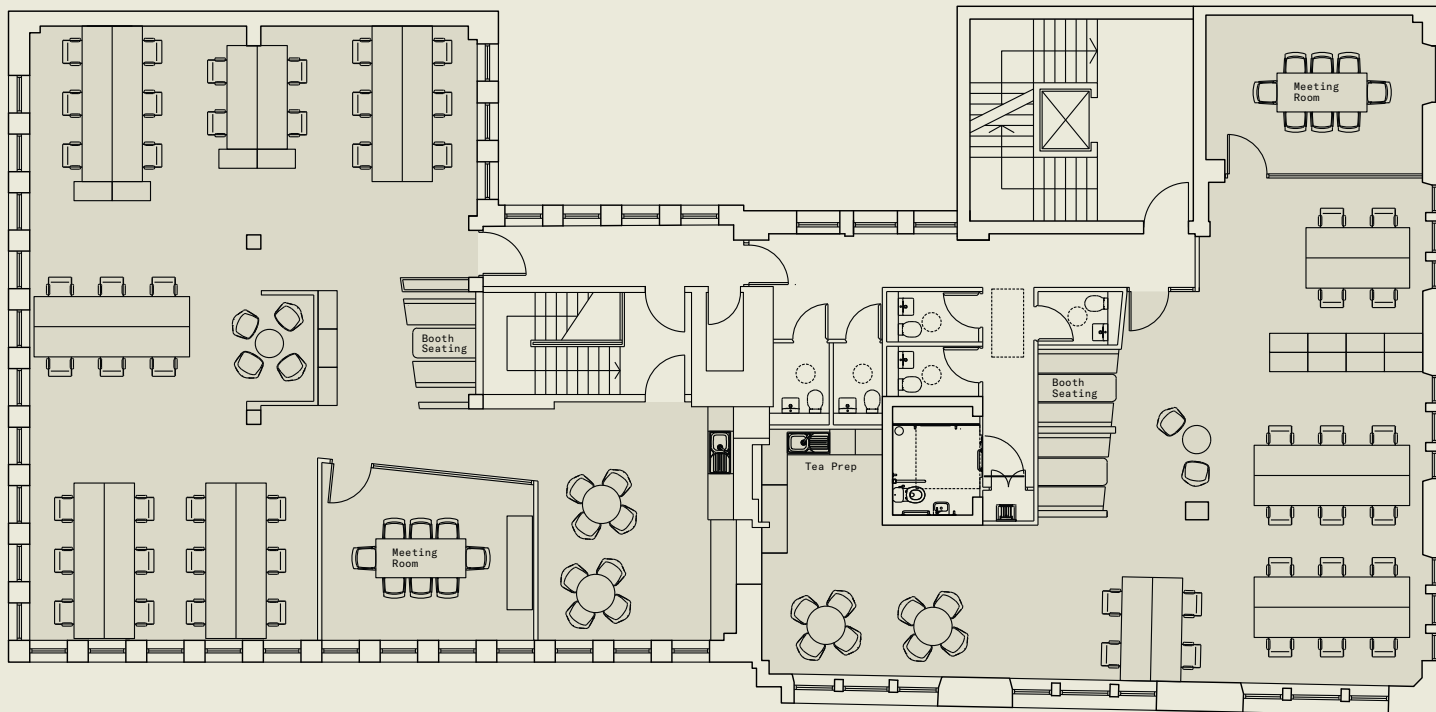
Type	To Let
Size	1,506 - 13,816 sq ft
Rent	£25 psf
Fitout	Fitted

mc2-offices.com

0141 266 0717

Space Plan

Proposed Fourth
Floor Layout



MC²

74 Waterloo Street

Glasgow
G2 7DJ

A range of thoughtfully designed studios, with private meeting spaces and breakout areas.

Type	To Let
Size	1,506 - 13,816 sq ft
Rent	£25 psf
Fitout	Fitted

mc2-offices.com

0141 266 0717

Location

Prominent corner location on Waterloo Street and Blythswood Street in the heart of Glasgow's core business district, offering direct access to all staff amenities and within one minute's walk of Glasgow Central train station and bus routes including the Glasgow Airport Express bus service.



MC²

74 Waterloo Street

Glasgow
G2 7DJ

A range of thoughtfully designed studios, with private meeting spaces and breakout areas.

Type	To Let
Size	1,506 - 13,816 sq ft
Rent	£25 psf
Fitout	Fitted

mc2-offices.com

0141 266 0717



We are an independent real estate agency, with expert local knowledge of Scotland's cities and towns. We ensure our clients, whether landlord or tenant, vendor or purchaser, receive the best advice. Offices are at the heart of what we do and it's been our passion since 1995.



Member of corfac.com

MC² gives notice that these particulars are set out as a general outline only for the guidance of intending Purchasers or Lessees and do not constitute any part of an offer or missives. Details are given without any responsibility and any intending Purchasers, Lessees or Third Party should not rely on them as statements or representations of fact, but must satisfy themselves by inspection or otherwise as to the correctness of each of them. No person employed or engaged by MC² has any authority to make any representation or warranty whatsoever in relation to this property. MC² is the licensed trading name of MC² (Glasgow) Ltd. Company registered in Scotland no SC704375. Registered office: 9 Royal Crescent, Glasgow G3 7SP. Generated on January 2025.

Colin Mackenzie

Founder

colin@mc2-offices.com

+44 (0)7912 805 890

Andy Cunningham

Founder

andy@mc2-offices.com

+44 (0)7793 808 490

mc2-offices.com

0141 266 0717