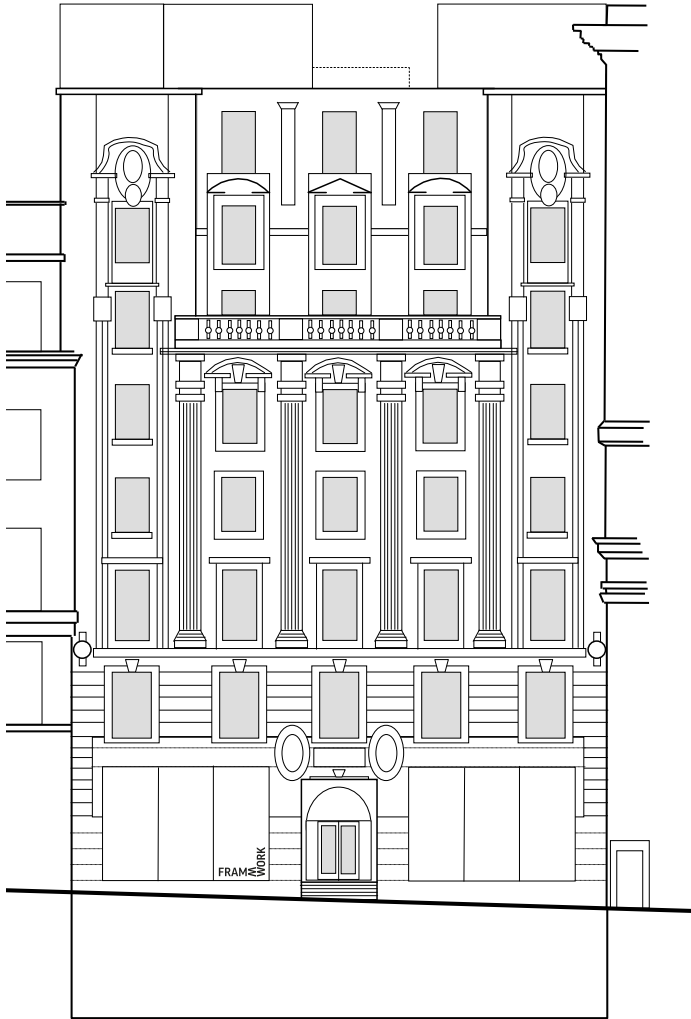




Plans

124 St Vincent Street
Glasgow / G2 5HF

FRAM  WORK



Seven - 4,676 Sq Ft

Six - 4,855 Sq Ft

Five - 4,860 Sq Ft

Four - 4,859 Sq Ft

Three - 4,864 Sq Ft

Two - 4,860 Sq Ft

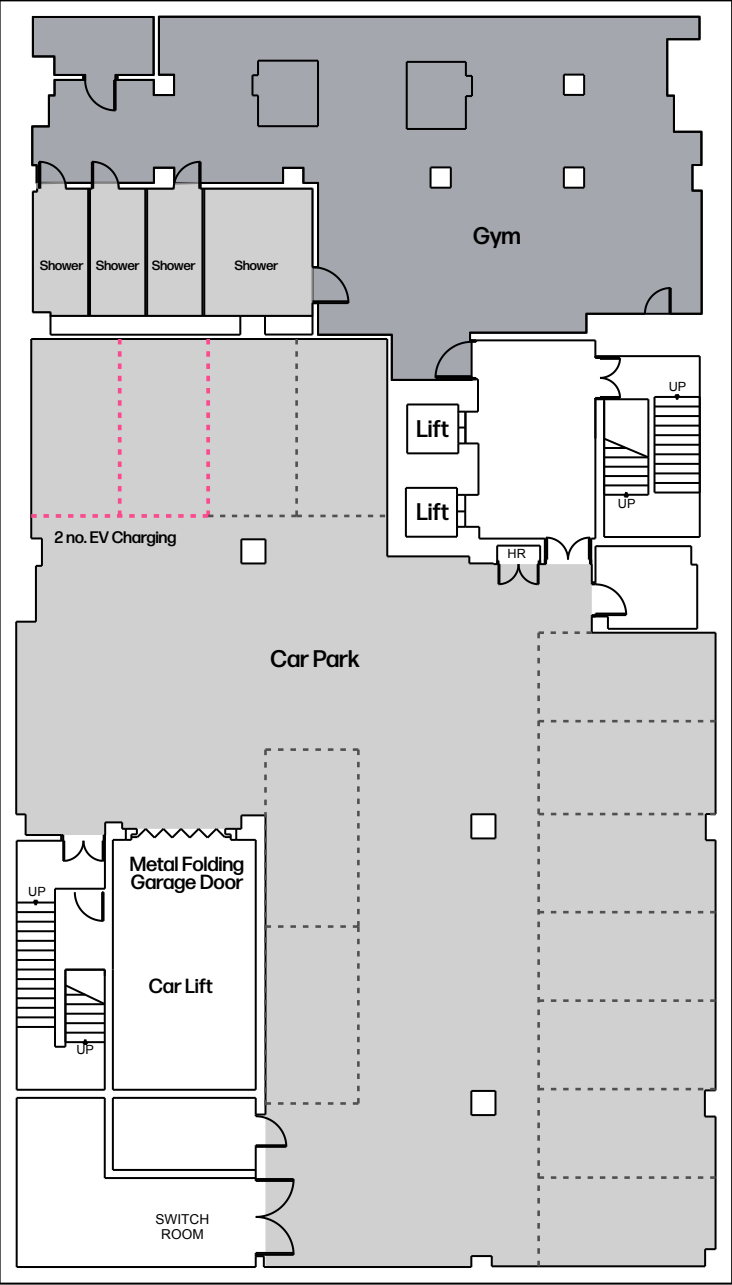
One - 5,430 Sq Ft

Ground - 2,056 Sq Ft

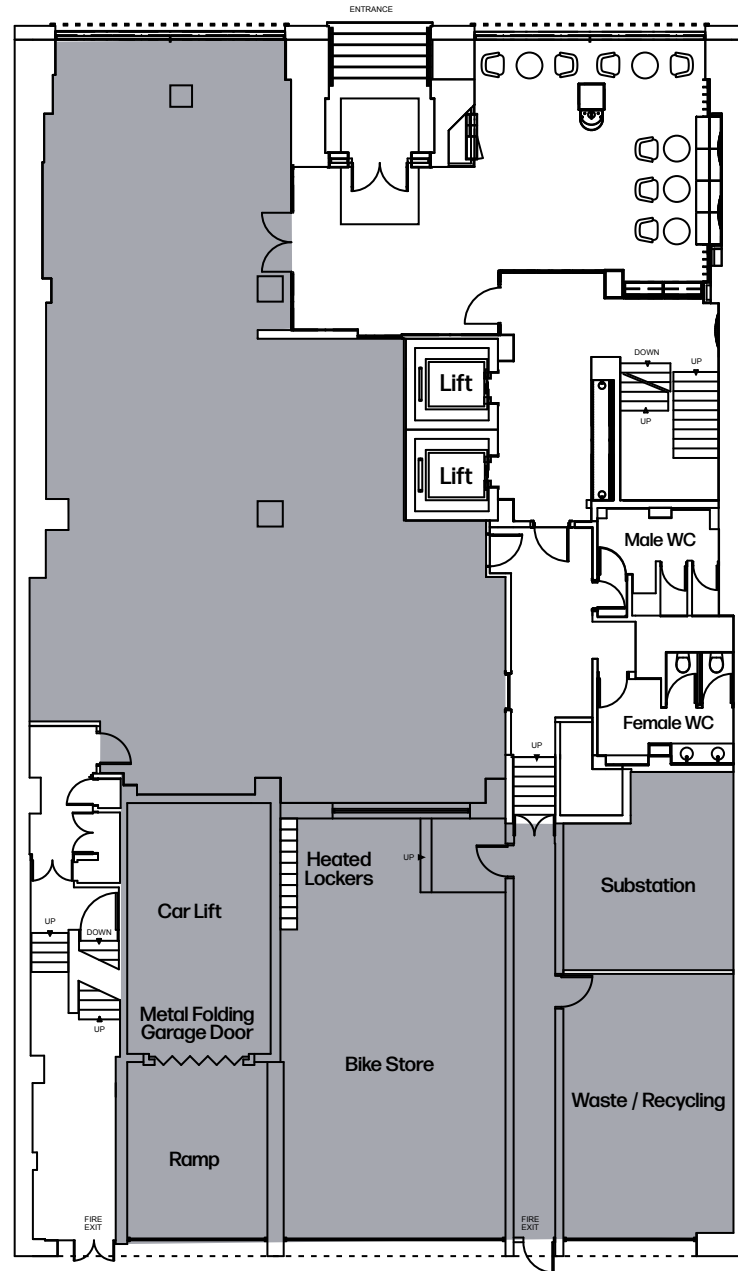
Basement

Total - 36,460 Sq Ft

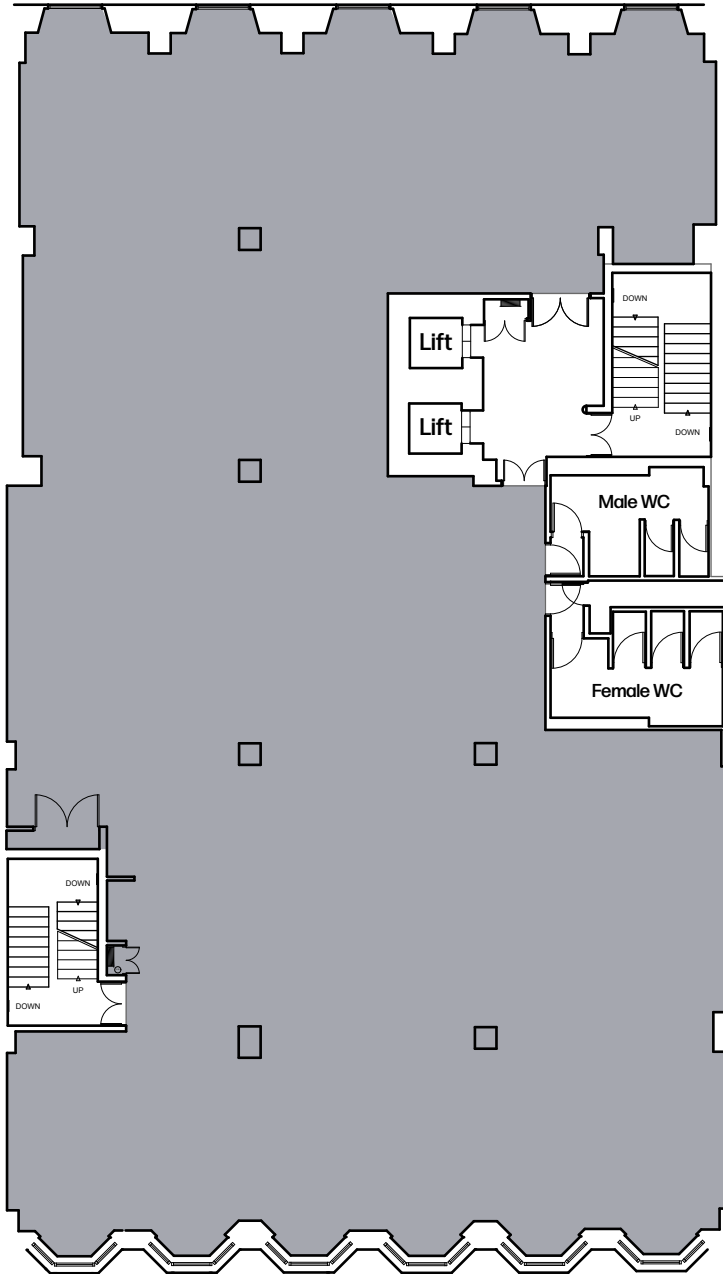
Floors can split from 2,000 Sq Ft upwards



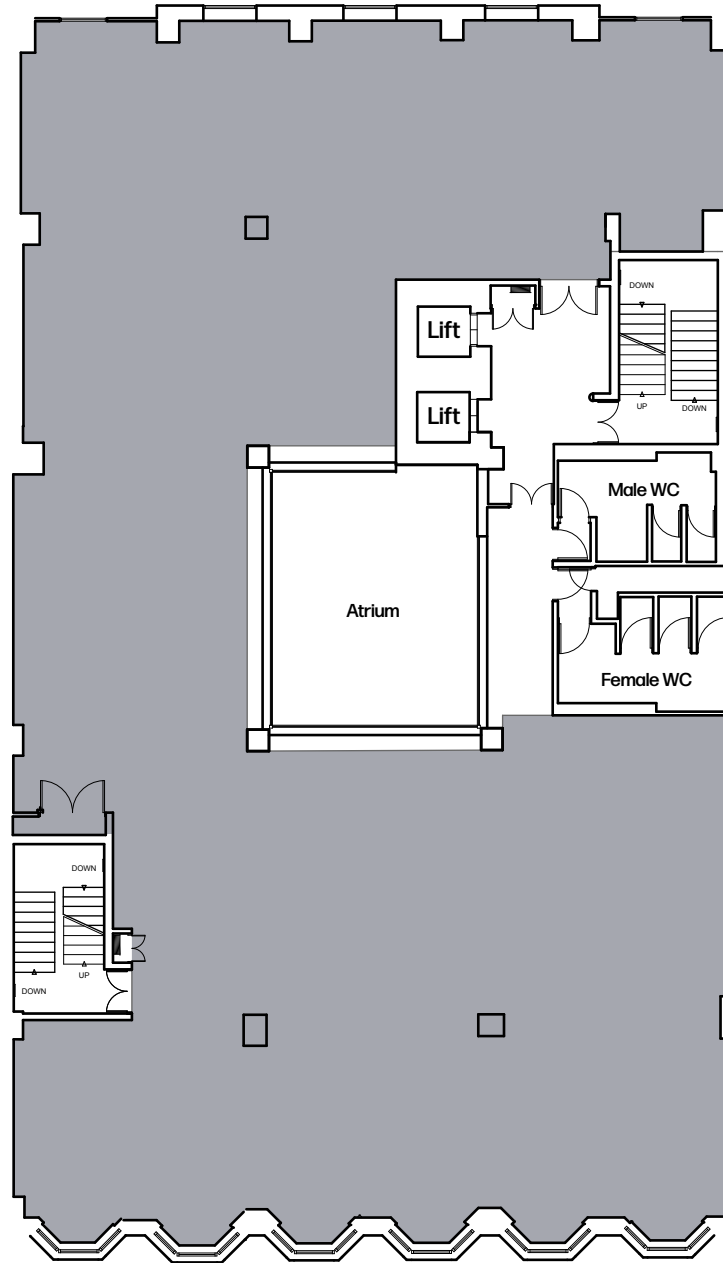
Basement



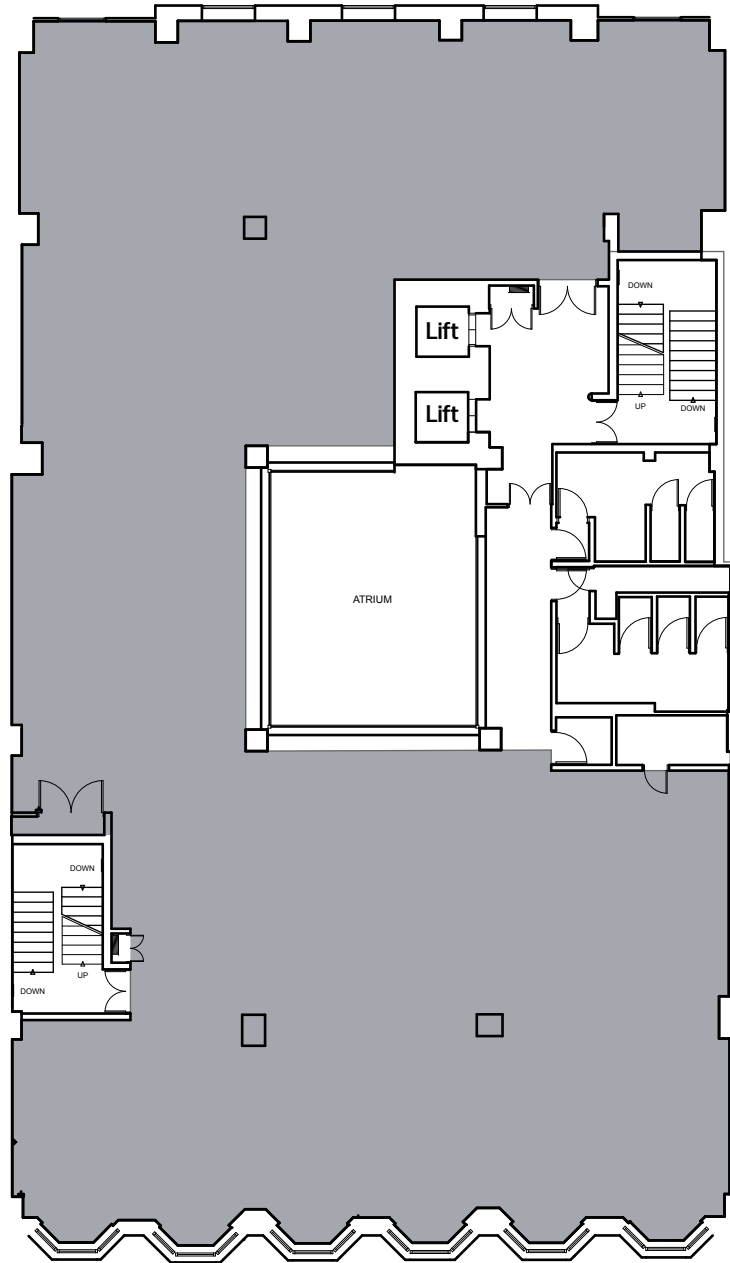
Ground - 2,056 Sq Ft



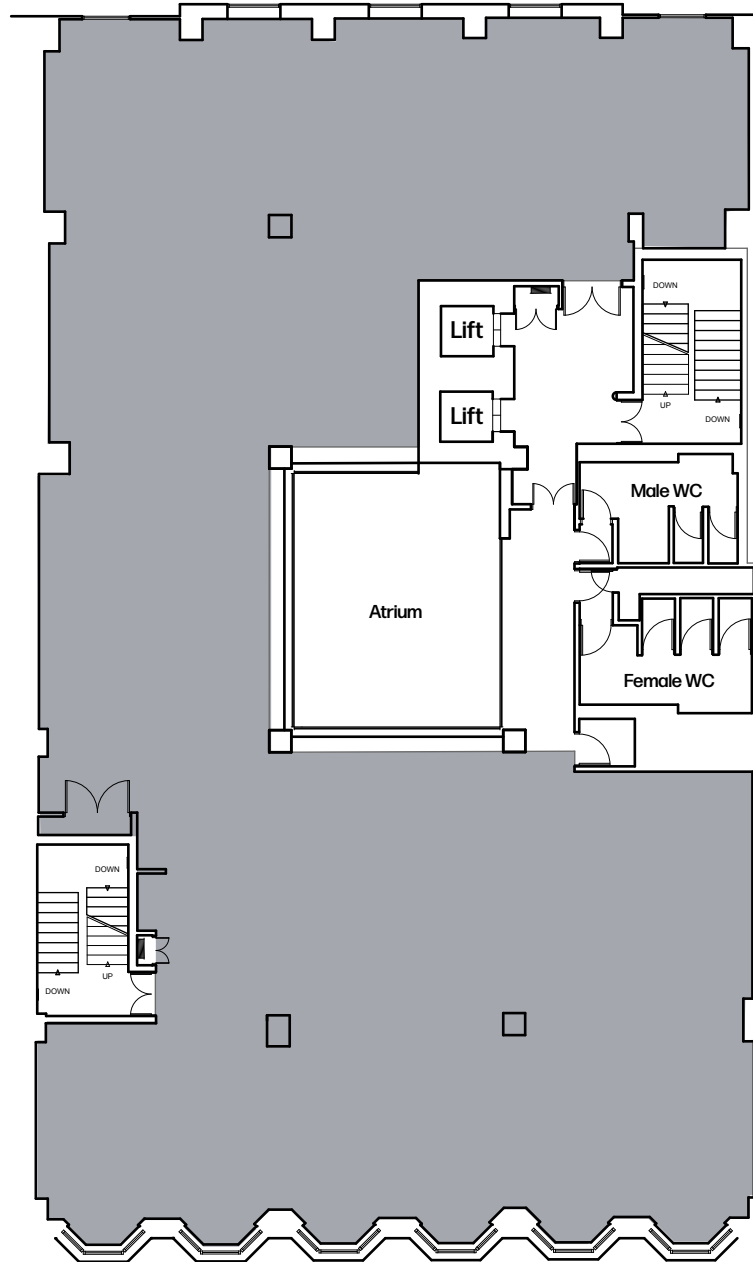
One - 5,430 Sq Ft



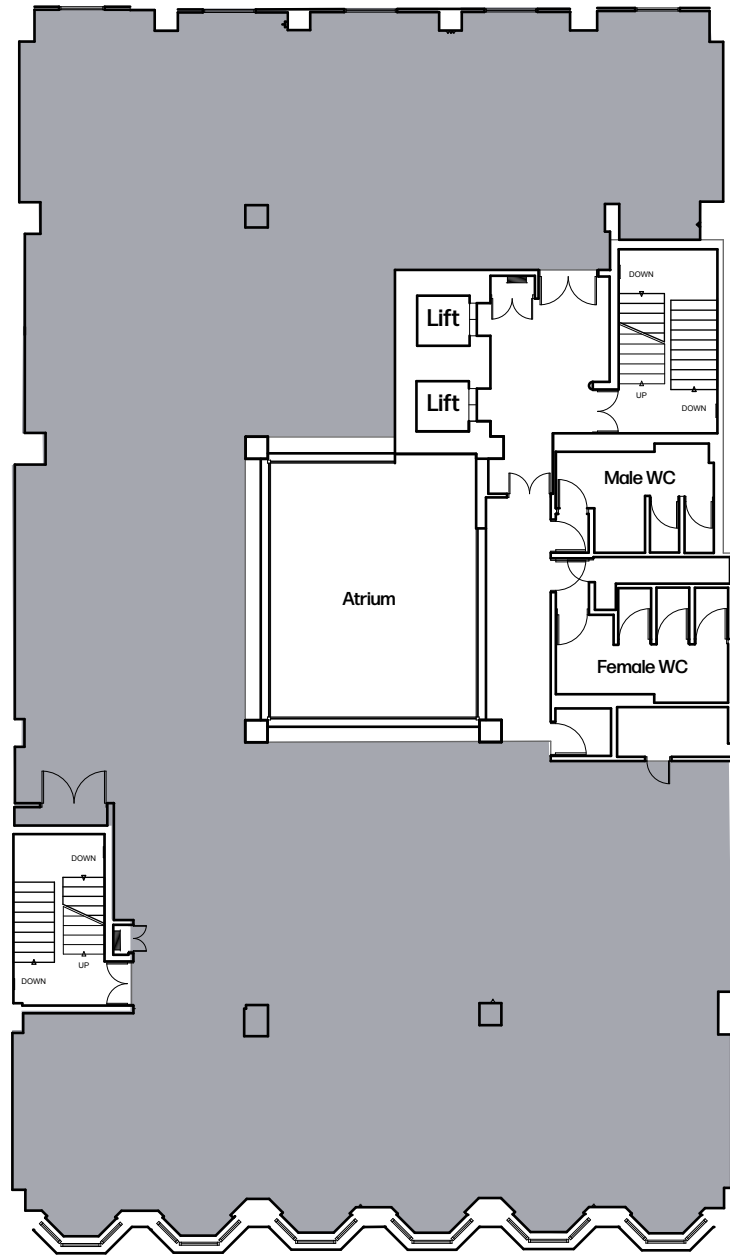
Two - 4,860 SqFt



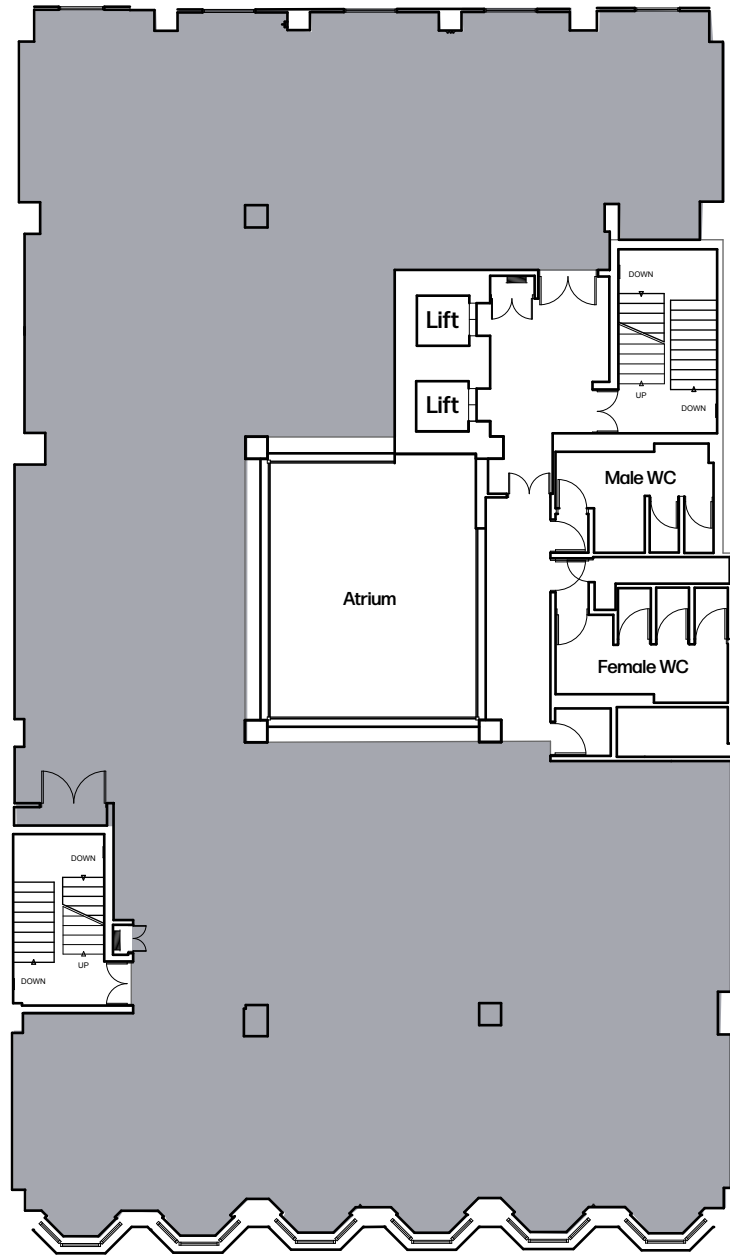
Three - 4,864 Sq Ft



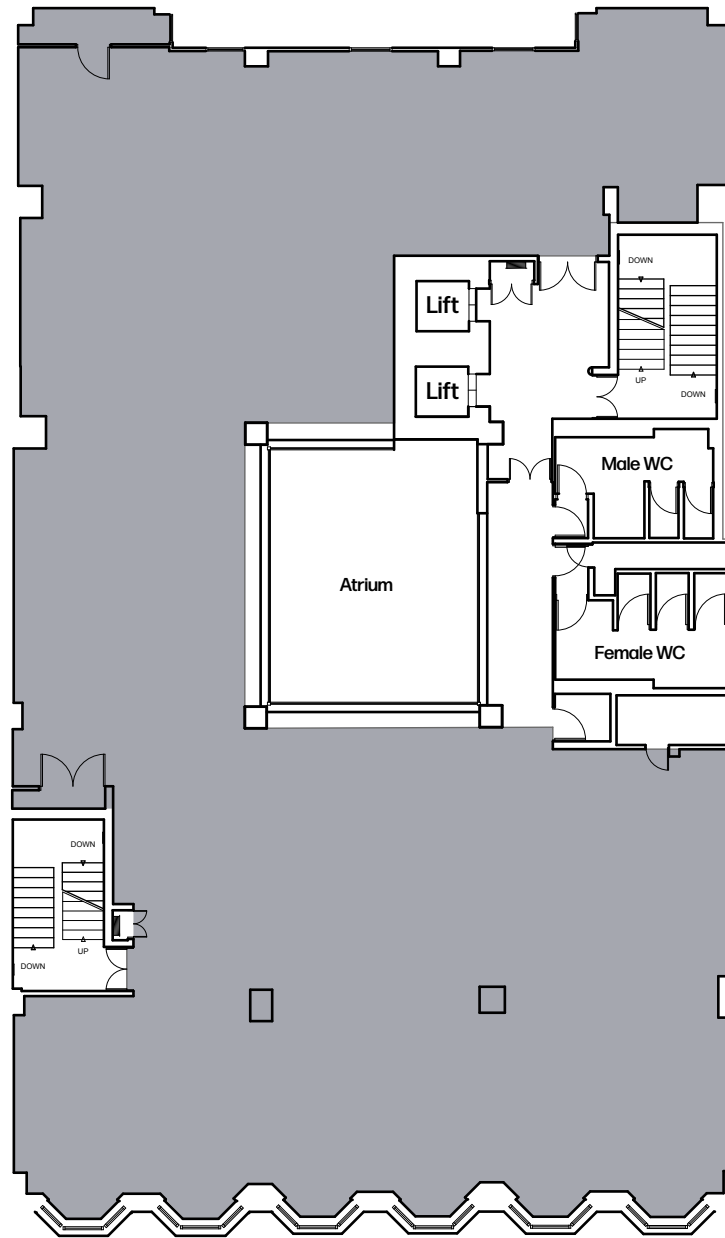
Four - 4,859 Sq Ft



Five - 4,860 Sq Ft



Six - 4,855 Sq Ft



Seven - 4,676 Sq Ft

FRAM  WORK