

Floor Plans

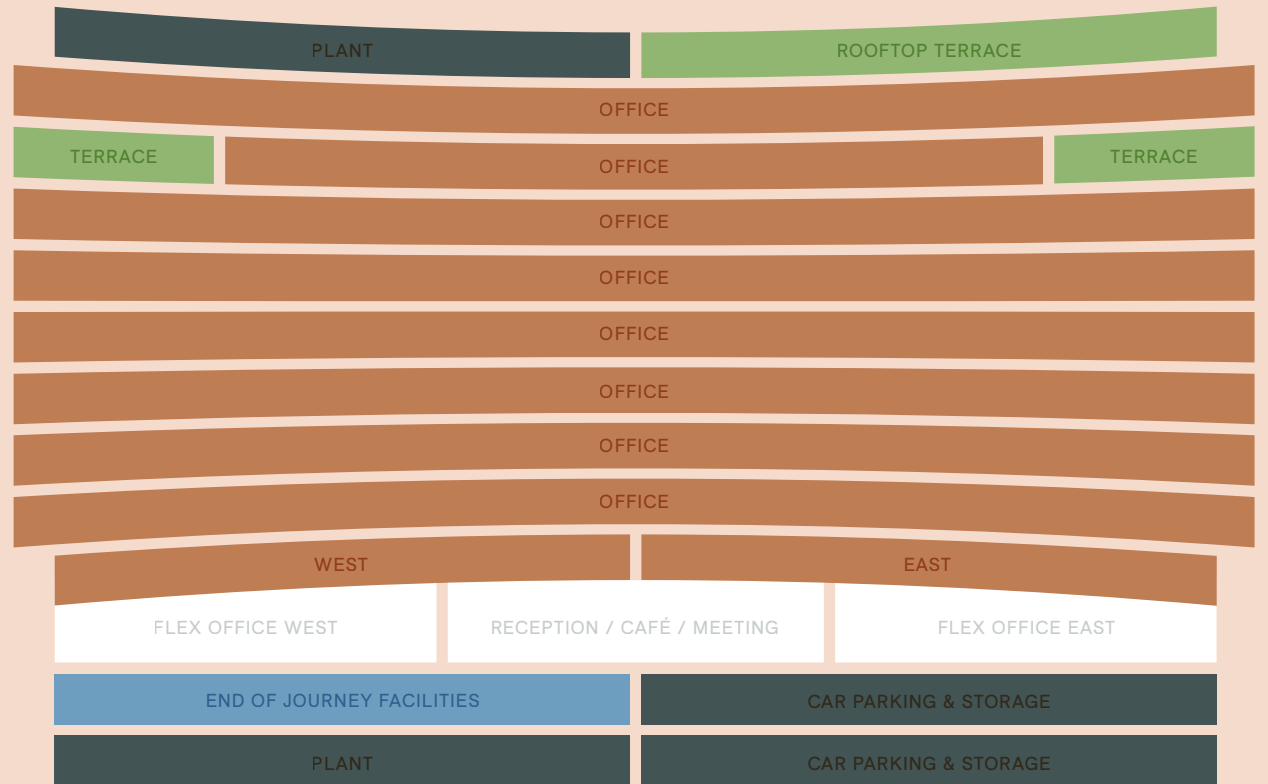
AURORA

120 Bothwell Street, Glasgow

The Space

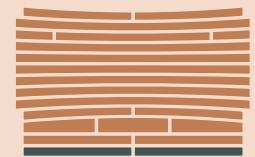
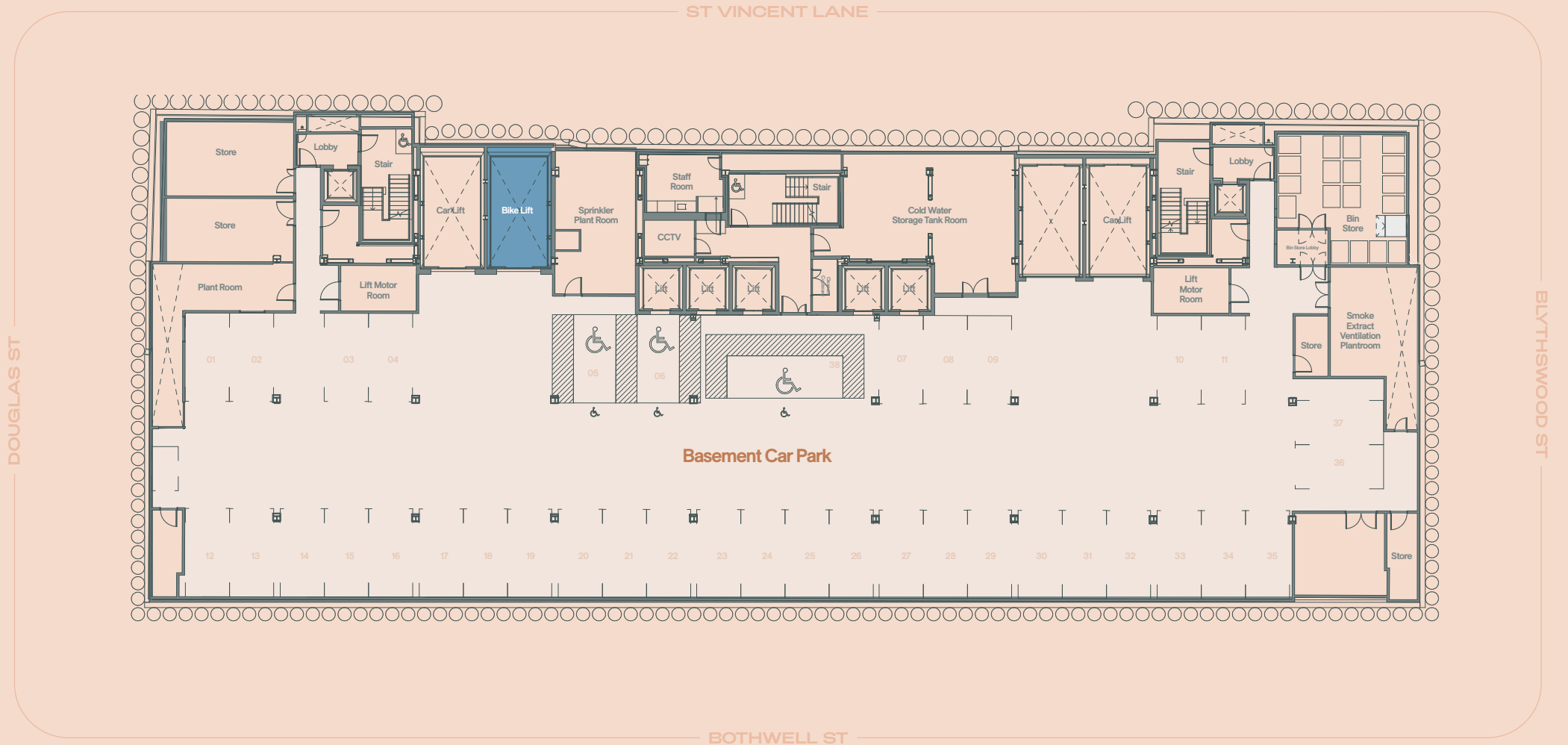
AURORA

Roof Level	–	Communal Rooftop Terrace: 4,000 sq ft
9 th Floor	17,481	
8 th Floor	17,481	Each Terrace: 700 sq ft
7 th Floor	19,195	
6 th Floor	19,050	
5 th Floor	19,375	
4 th Floor	19,375	
3 rd Floor	19,375	
2 nd Floor	19,375	
1 st Floor	12,010	West: 5,713 sq ft / East: 6,297 sq ft
Ground	9,841	West: 3,767 sq ft / East: 6,074 sq ft
Lower Ground	603	24 Car Spaces / 200 Bike Spaces
Basement	581	37 Car Spaces / Storage Space
Total	173,742 sq ft	



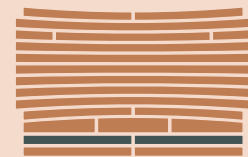
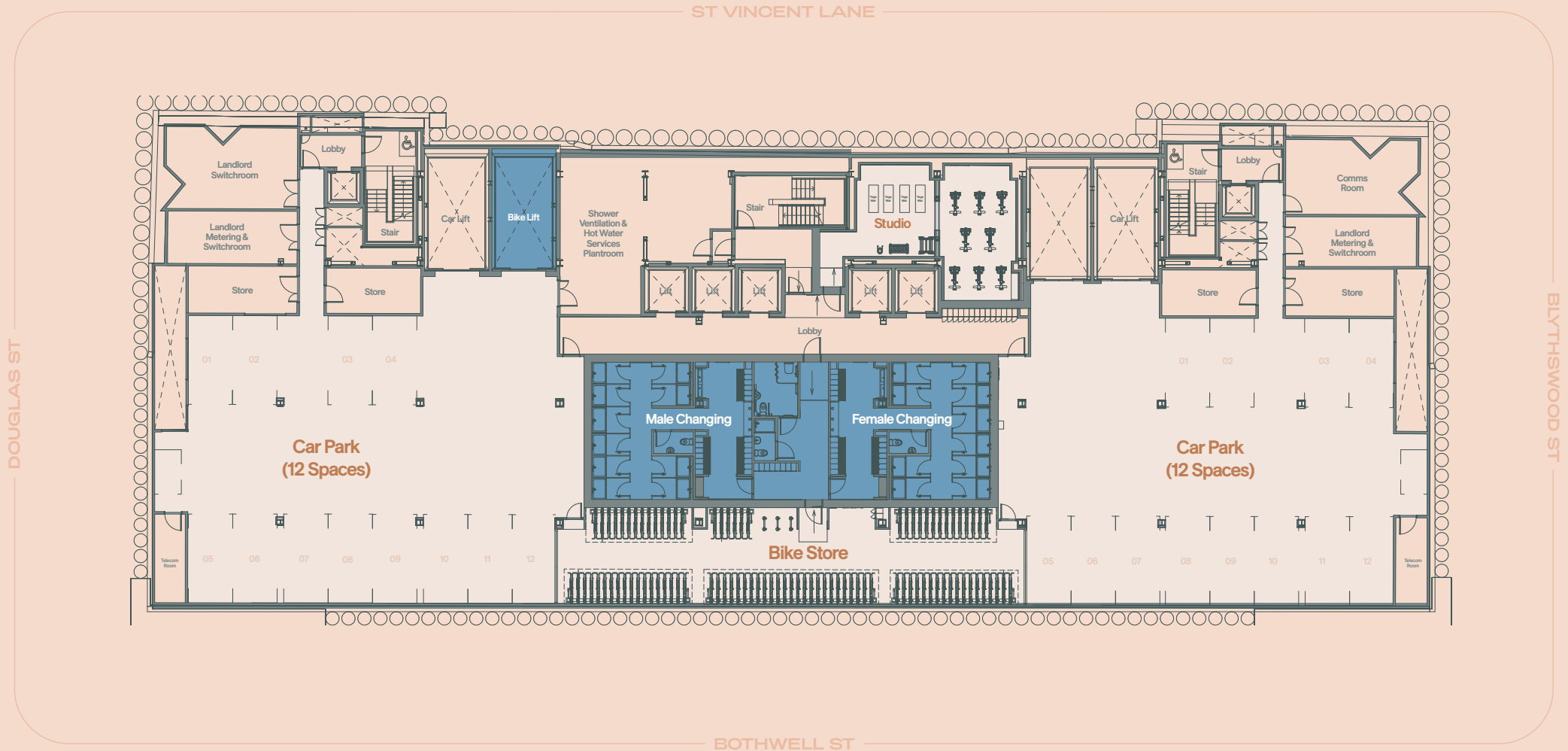
Basement

581 sq ft (38 Car Spaces / Storage Space)



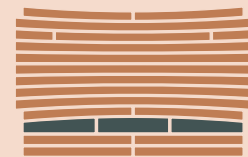
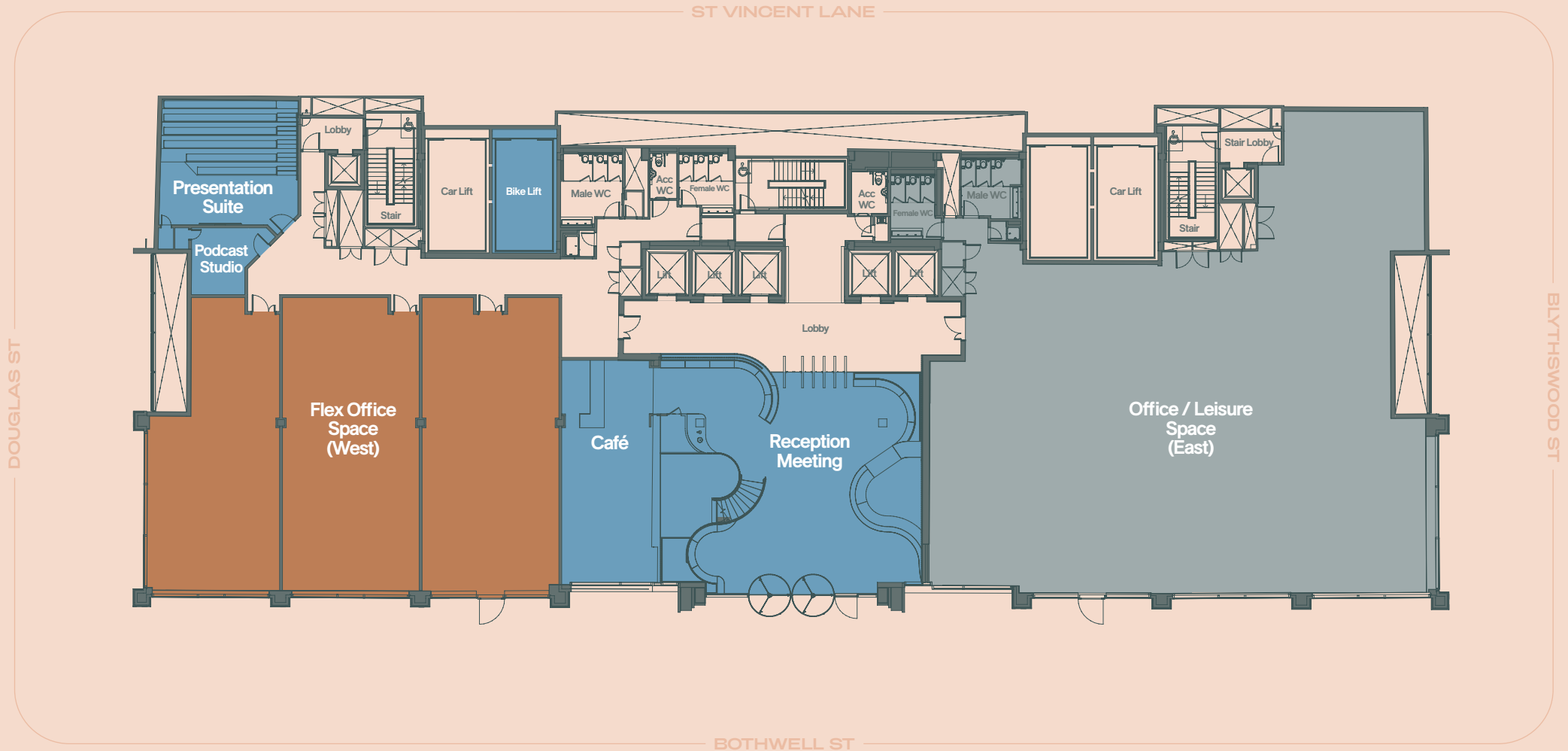
Lower Ground

603 sq ft (24 Car Spaces / 200 Bike Spaces)



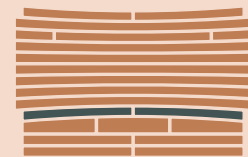
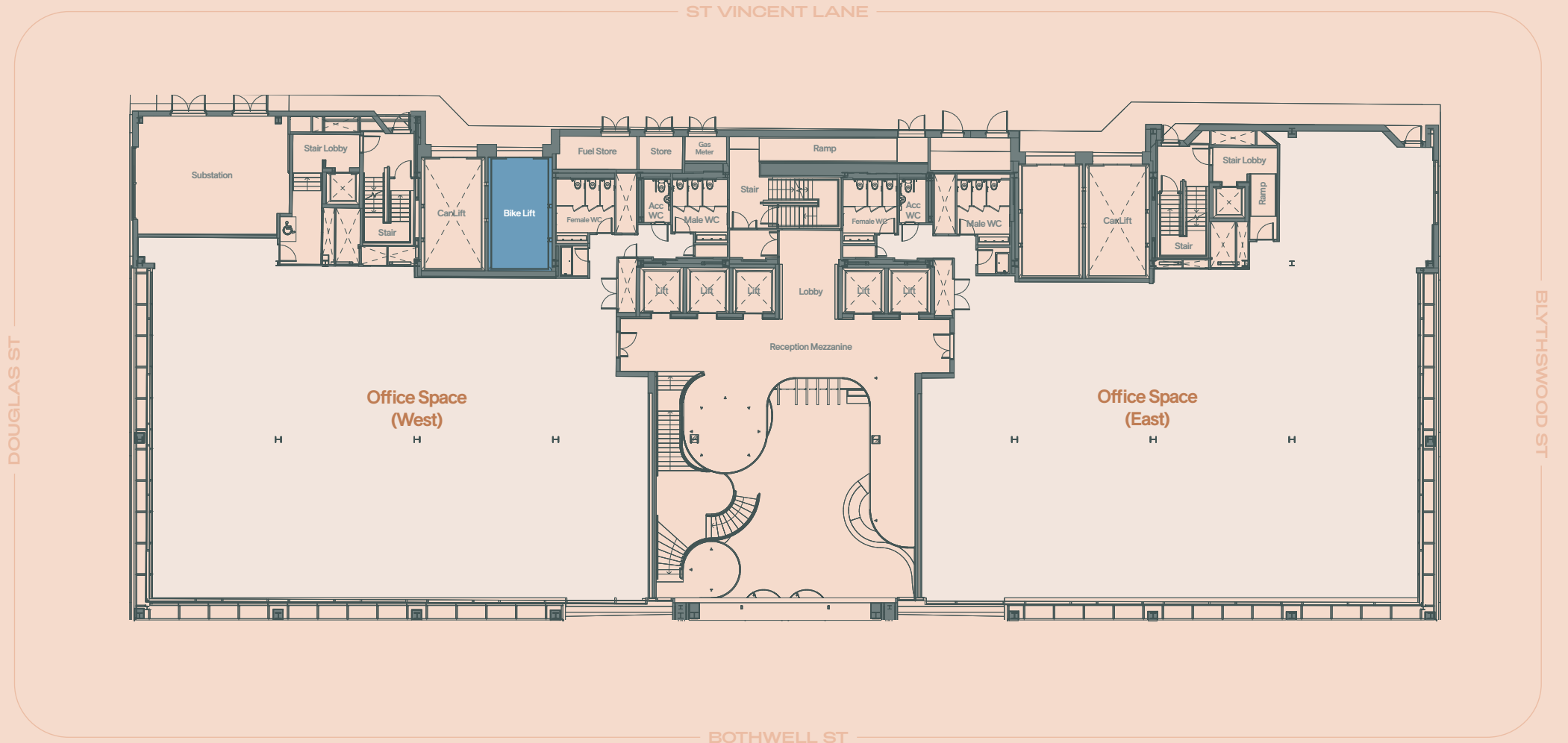
Ground

9,841 sq ft (West: 3,767 sq ft / East: 6,074 sq ft)



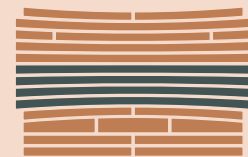
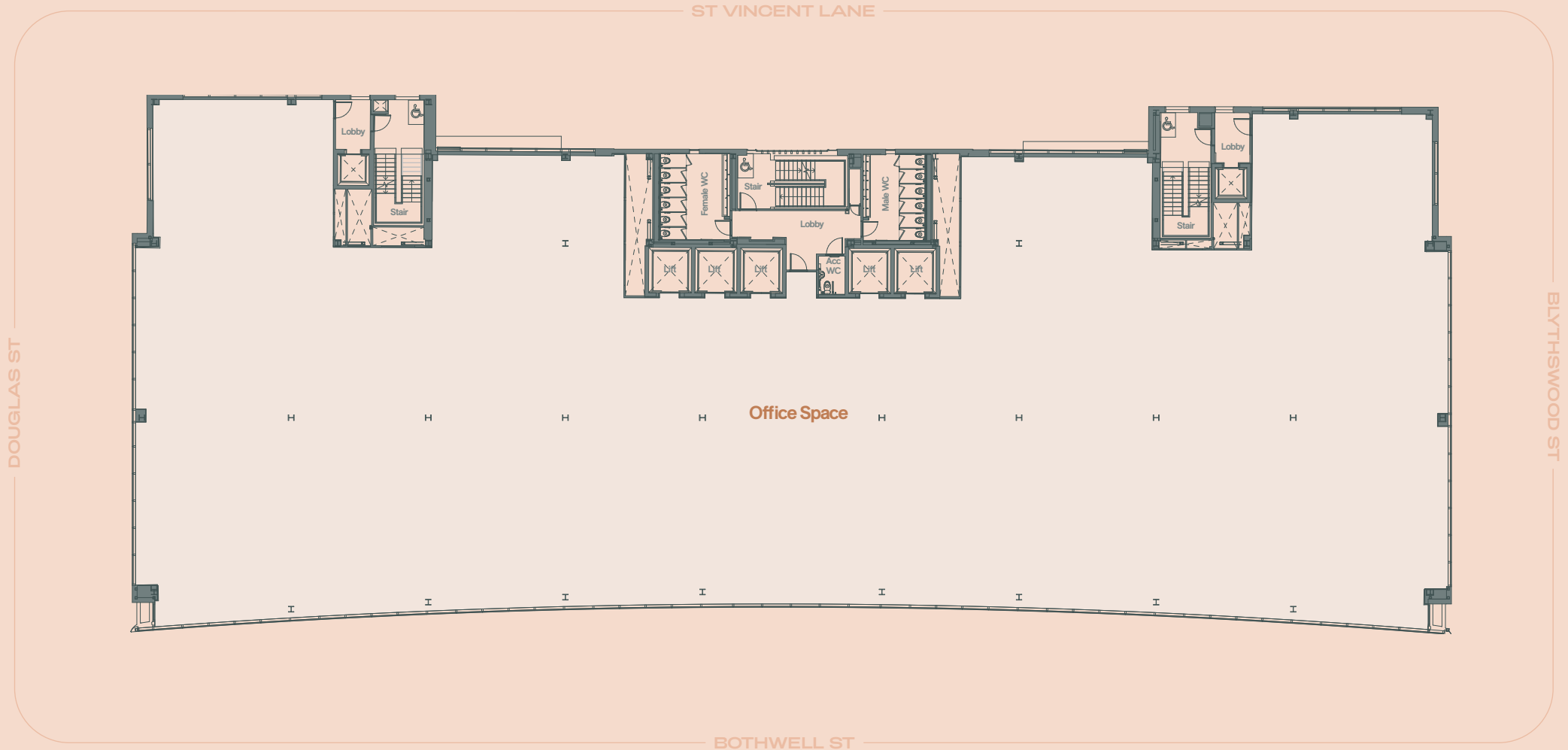
1st Floor

12,010 sq ft (West: 5,713 sq ft / East: 6,297 sq ft)



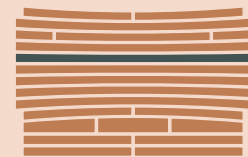
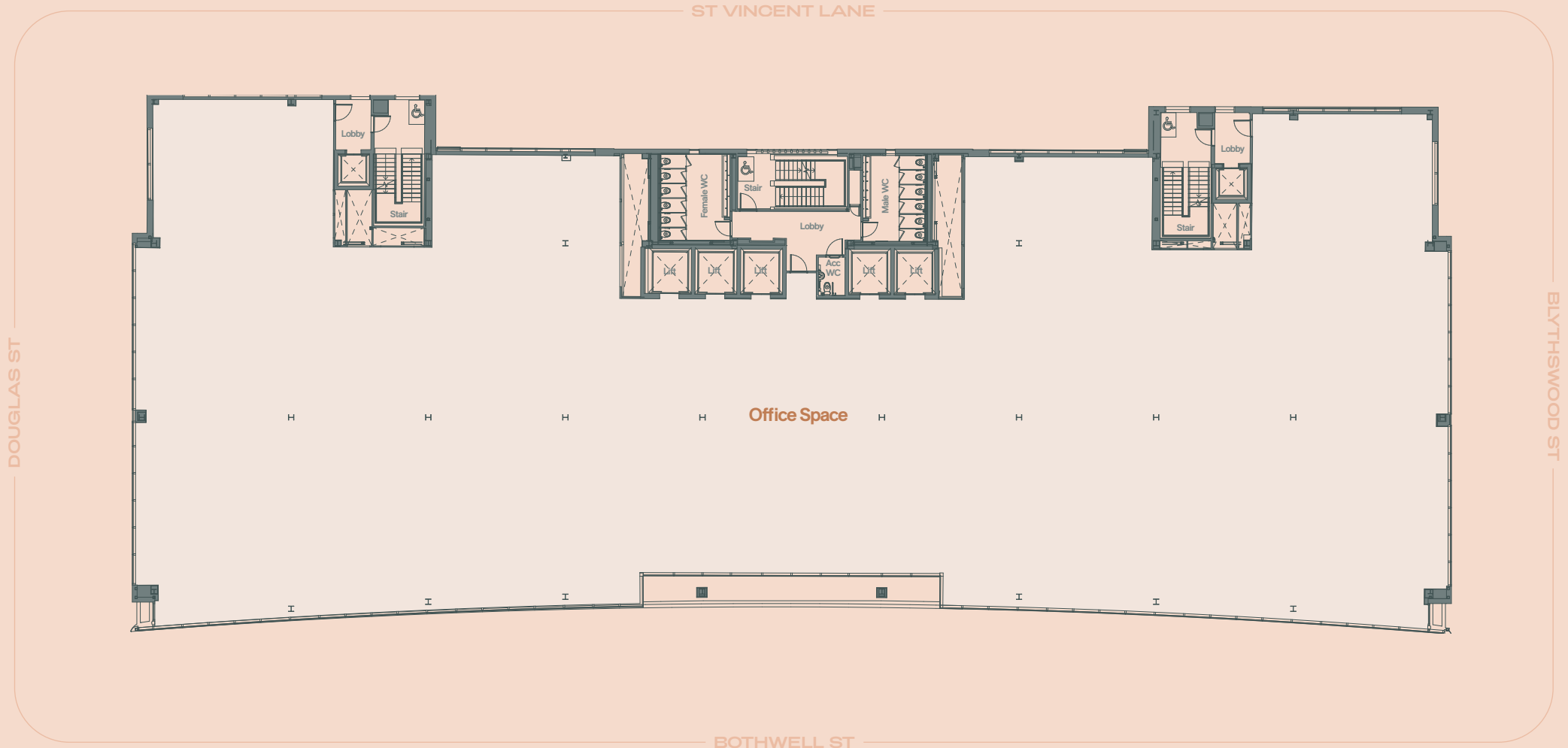
Typical Floor (2nd – 5th)

19,375 sq ft



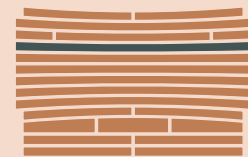
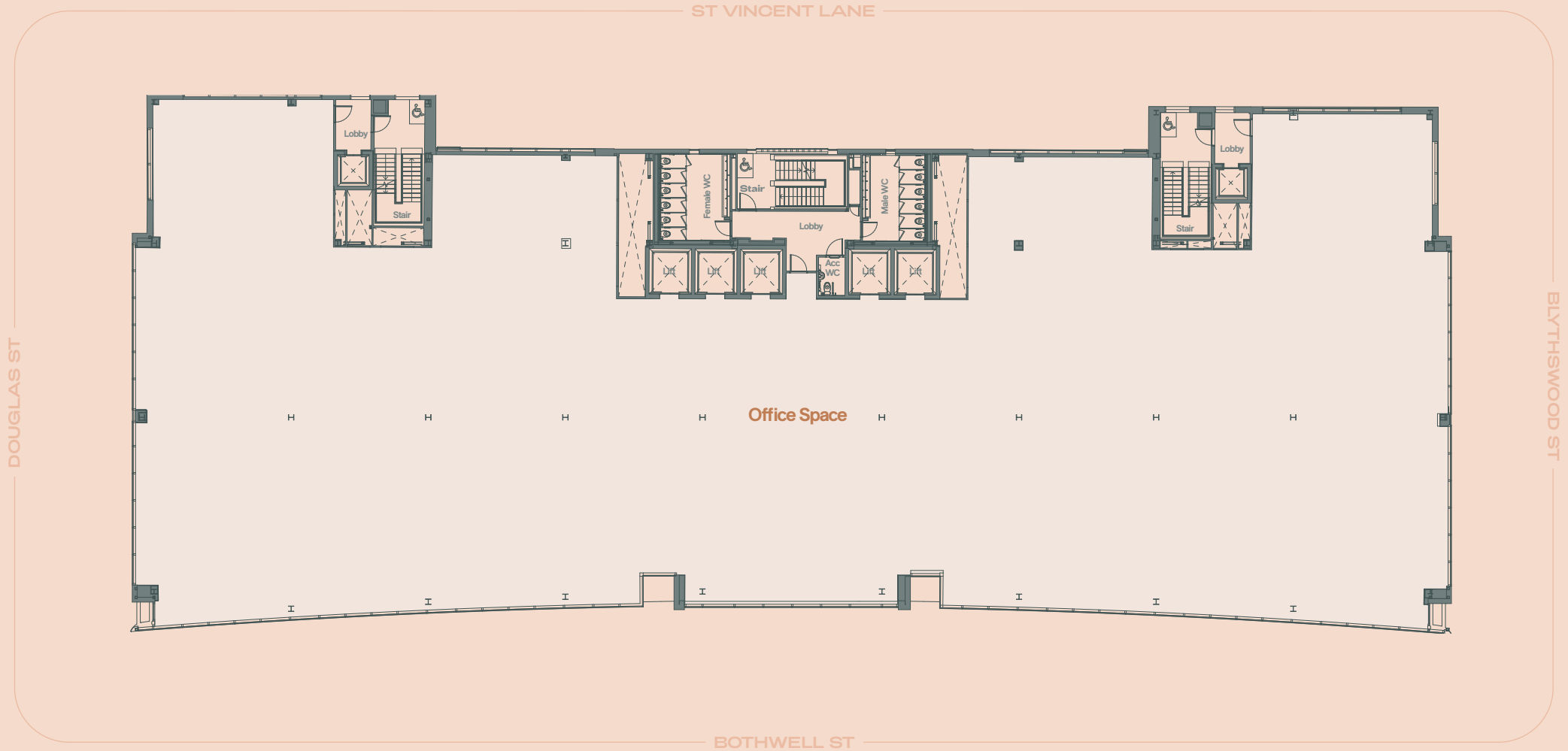
6th Floor

19,050 sq ft



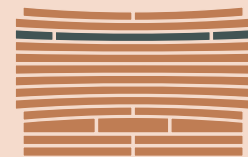
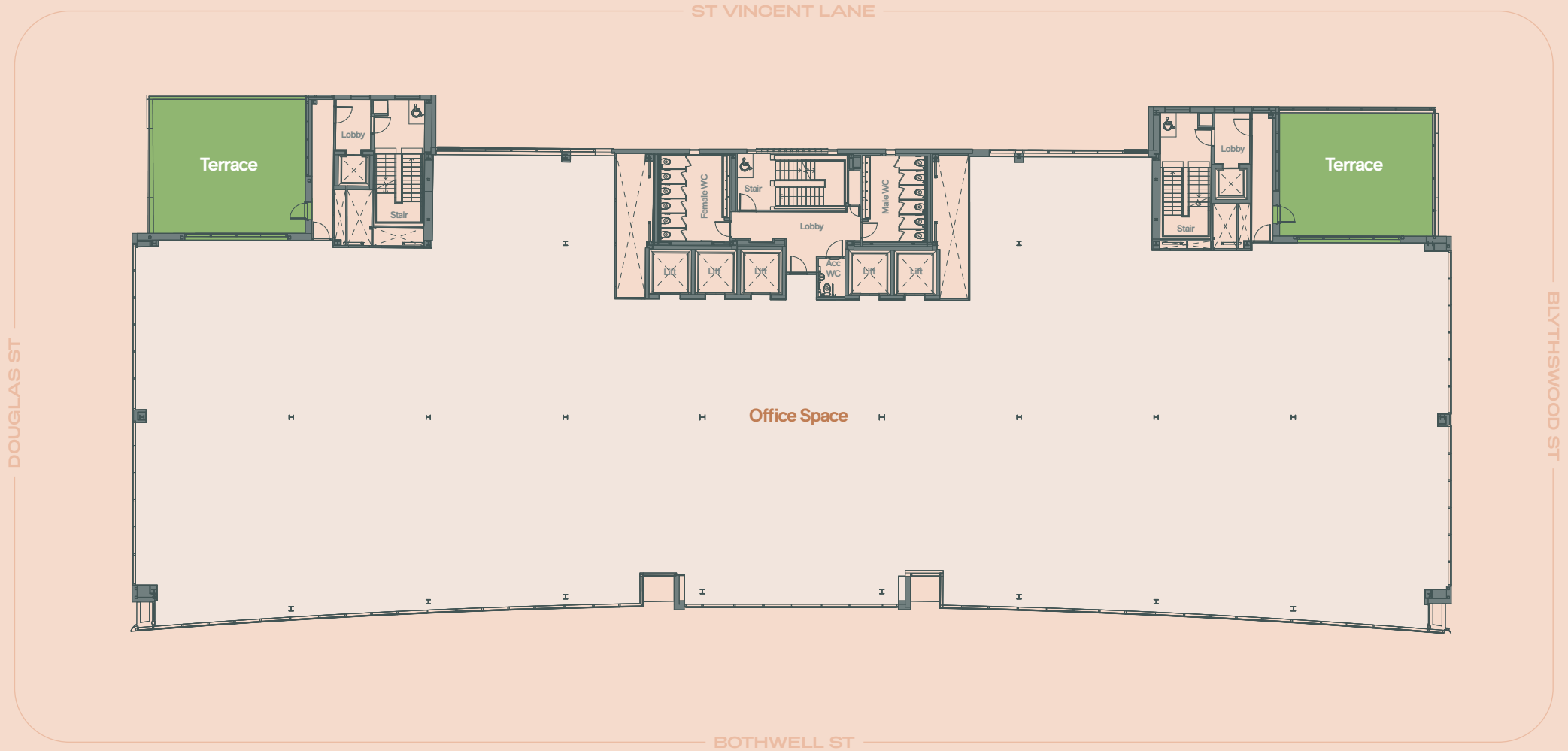
7th Floor

19,195 sq ft



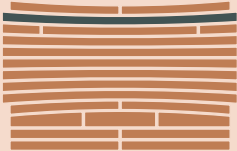
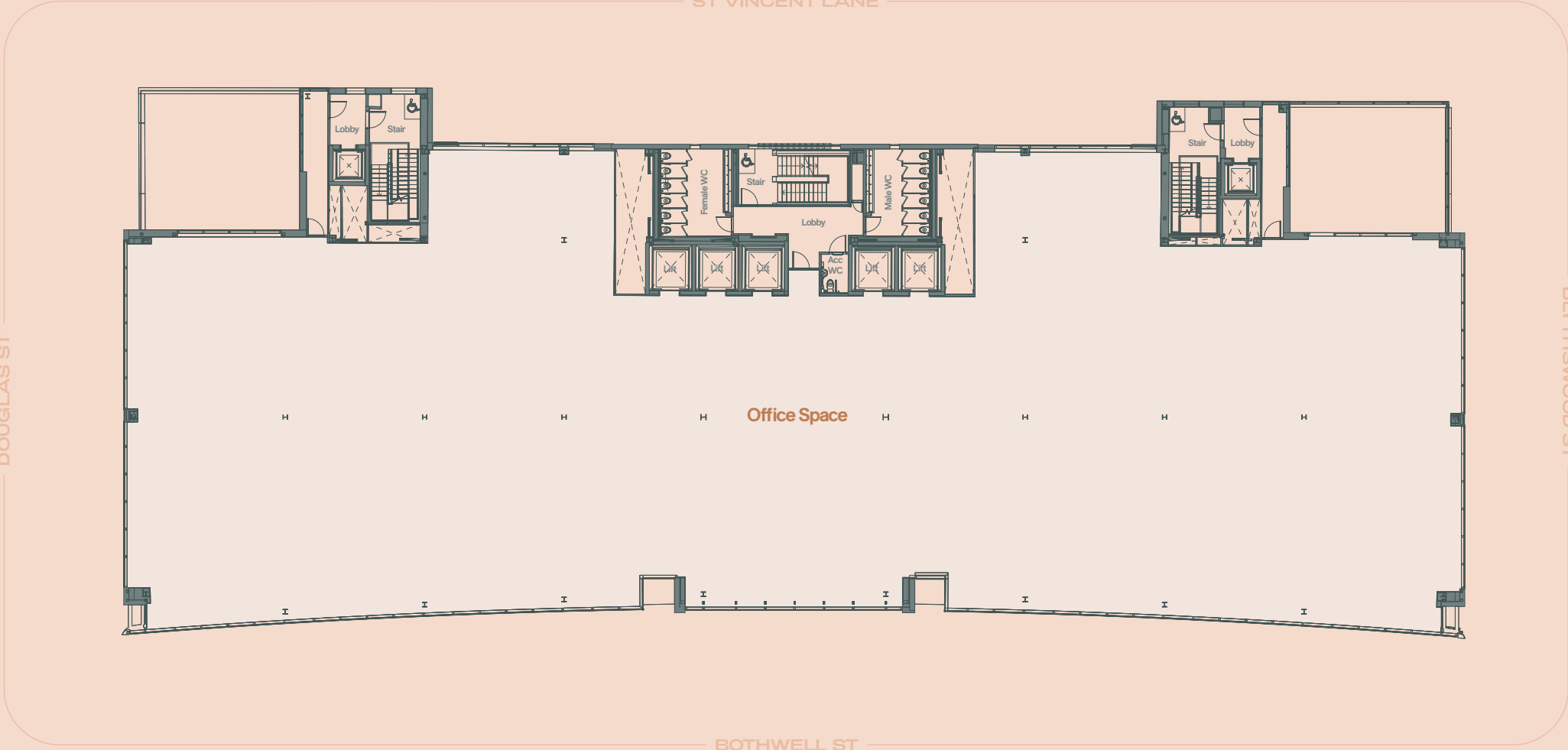
8th Floor

17,481 sq ft (Each Terrace 700 sq ft)



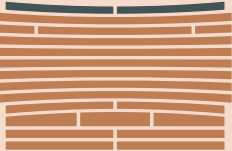
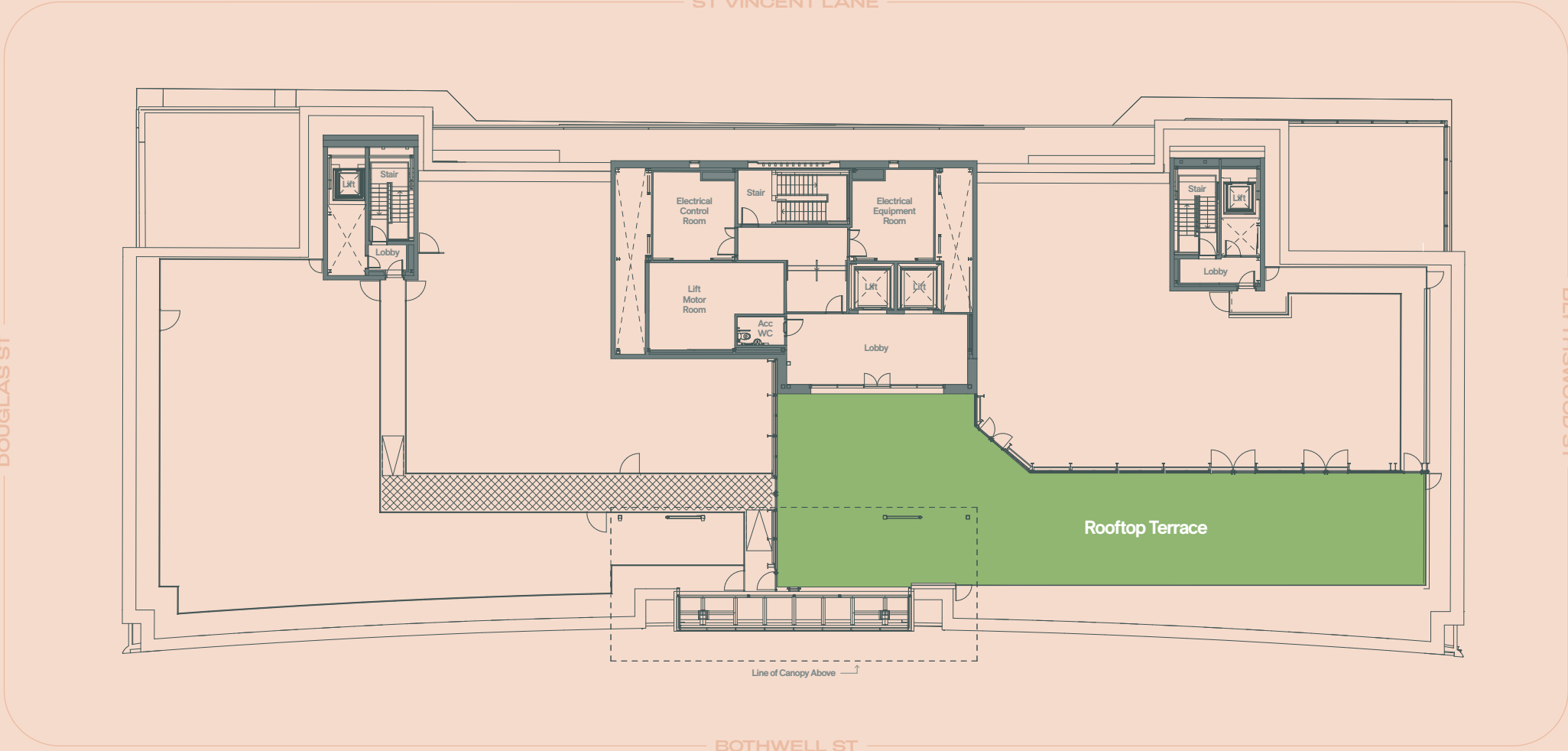
9th Floor

17,481 sq ft



Roof Level

Communal Rooftop Terrace (4,000 sq ft)



AURORA

120 Bothwell Street, Glasgow

For further information please contact:

CBRE

Sarah Hagen
sarah.hagen@cbre.com
07468 724 253

Martin Speirs
martin.speirs@cbre.com
07590 864 816



Stephen Lewis
slewis@hfdgroup.com
07500 989 524

Elliot Cumming
ecumming@hfdgroup.com
07927 586 413

MC²

Colin Mackenzie
colin@mc2-offices.com
+44 (0)7912 805 890

Andy Cunningham
andy@mc2-offices.com
+44 (0)7793 808 490

DEVELOPMENT BY

FORM/A

forma-fund.com

DEVELOPMENT
MANAGEMENT BY



hfdgroup.com